

V752

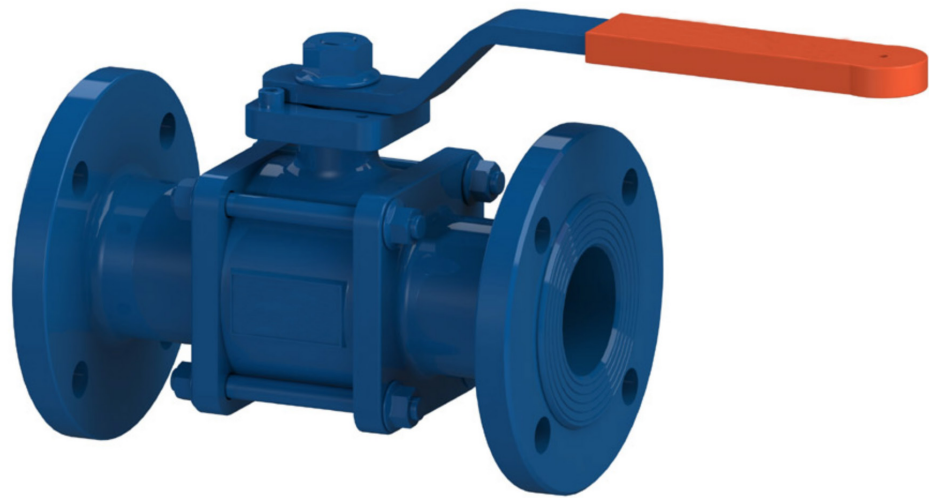
LONG TYPE

BALL VALVE



Product Description

TVN V752 PN10-16 3 Piece Ball Valves are designed and manufactured for the pipelines where 'tight sealing' is required. Quarter turn design enables easy and faster operation. Ball valves with 3 pieces, simple construction allow easy maintenance over a long working life, therefore preferred for industrial applications as well as for utility services.



Technical Data	
Size range	DN15 - DN250
Pressure range	PN 16
Temperature	-10°C to +200 °C
Design	DIN 3357
Face to face	EN 558 Series 1 / DIN3202 F1
Flange drilling	EN 1092-2 ISO 7005-2 Flanged
Coating	Industrial Epoxy
Testing	EN 12266-1
Marking	EN 19
Operation	Handlever
	Electrical Actuators

Application Range

- Boiling water systems
- Power plants & industrial applications
- HVAC
- Chemical fluids
- Installation at plants

Related Item

- V851 Y-Strainer
- V651 Rubber Expansion Joint
- V208 Wafer Swing Check Valve
- V209 Dual Plate Check Valve



HVAC



POTABLE WATER

V752

LONG TYPE

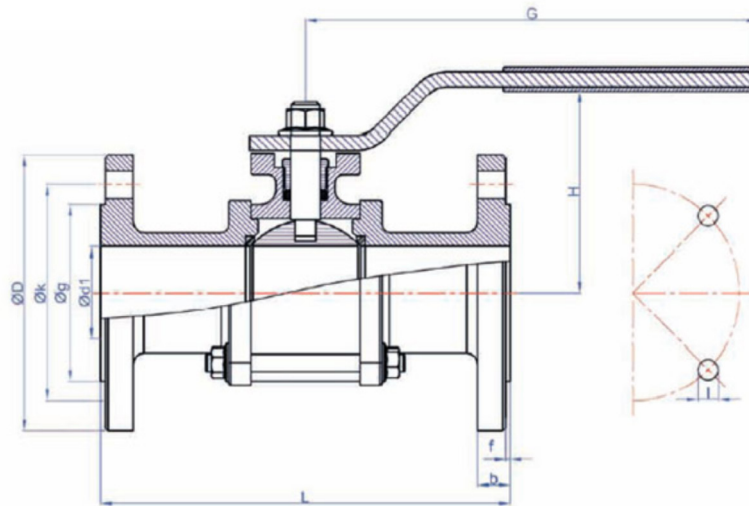
BALL VALVE



Product Features

- The body flanges at the 3 pieced valve is supporting the ball mechanism to create a higher packing feature.
- GG25 body ball valves can be used in almost all process industries like water distribution networks, food and pharmaceutical plants, water treatment, power plants as well as in machinery automation industries.
- The stainless steel ball & stem and sealing mechanism, ensures the valve for high temperature usage.
- It is advised to be used either at fully open or fully closed position.
- The ball valves open/close position can be easily observed from the handlever position easily.
- PTFE sealing provides long service life with zero leakage rates.
- The valves are designed for bidirectional usage.
- Up to request, the body material can be GGG40 ductile iron.
- Through its full bore design, pressure loss is almost at zero point.
- Flange connections according to EN1092-2 / ISO 7005-2.
- By adding an ISO top flange, the valve operation can be maintained by gearbox, pneumatical or electrical actuator.
- To provide a long service life, filtering of the pipeline by TVN V851 Y-Strainer is advised.
- Hydrostatic test pressure for seat: PN x 1.1 , for shell: PN x 1.5 according to EN 12266-1.

Material List



No	Part	Material
1	Body	EN-GJL-250 Cast Iron (GG25) / EN-GJS-400 Ductile Iron (GGG40)
2	Flange	EN-GJL-250 Cast Iron (GG25) / EN-GJS-400 Ductile Iron (GGG40)
3	Ball	AISI 430 / AISI 304 Stainless Steel
4	Ball Sealing	PTFE
5	Body Sealing	PTFE
6	Stem	AISI 420 Stainless Steel
7	Stem Sealing	PTFE
8	Stem Nut	AISI 1040 Steel
9	Handlever	ST-37 Steel
10	Nut	AISI 1030 Steel
11	Lever Cover	PVC
12	Bolt	AISI 1030 Steel
13	Nut	AISI 1030 Steel

