

# V751

## FLANGED BALL VALVE



### Product Description

TVN V751 PN10-16 Two Piece Ball Valves are designed and manufactured for the pipelines where 'tight sealing' is required. Quarter turn design enables easy and faster operation. Ball valves with 2 pieces, simple construction allow easy maintenance over a long working life, therefore preferred for industrial applications as well as for utility services.



Technical Data	
Size range:	DN15 - DN250
Pressure range:	PN 10-16
Temperature:	-10°C to +200 °C
Design:	DIN 3357
Face to face:	EN 558 Series 14 / DIN3202 F4
Flange drilling:	EN 1092-2 ISO 7005-2 Flanged
Coating:	Industrial Epoxy
Testing:	EN 12266-1
Marking:	EN 19
Operation:	Handlever
	Electrical Actuators

### Application Range

- Boiling water systems
- Power plants & industrial applications
- HVAC
- Chemical fluids
- Installation at plants

### Related Item

- V851 Y-Strainer
- V651 Rubber Expansion Joint
- V208 Wafer Swing Check Valve
- V209 Dual Plate Check Valve



HVAC



POTABLE WATER

# V751

## FLANGED BALL VALVE



### Product Features

- GG25 body ball valves can be used in almost all process industries like water distribution networks, food and pharmaceutical plants, water treatment, power plants as well as in machinery automation industries.
- The stainless steel ball & stem and sealing mechanism, ensures the valve for high temperature usage.
- It is advised to be used either at fully open or fully closed position.
- The ball valves open/close position can be easily observed from the handlever position easily.
- PTFE sealing provides long service life with zero leakage rates.
- The valves are designed for bidirectional usage.
- Through its full bore design, pressure loss is almost at zero point.
- Flange connections according to EN1092-2 / ISO 7005-2.
- Up to request, the body material can be GGG40 ductile iron.
- By adding an ISO top flange, the valve operation can be maintained by gearbox, pneumatical or electrical actuator.
- To provide a long service life, filtering of the pipeline by TVN V851 Y-Strainer is advised.
- Hydrostatic test pressure for seat: PN x 1.1 , for shell: PN x 1.5 according to EN 12266-1.

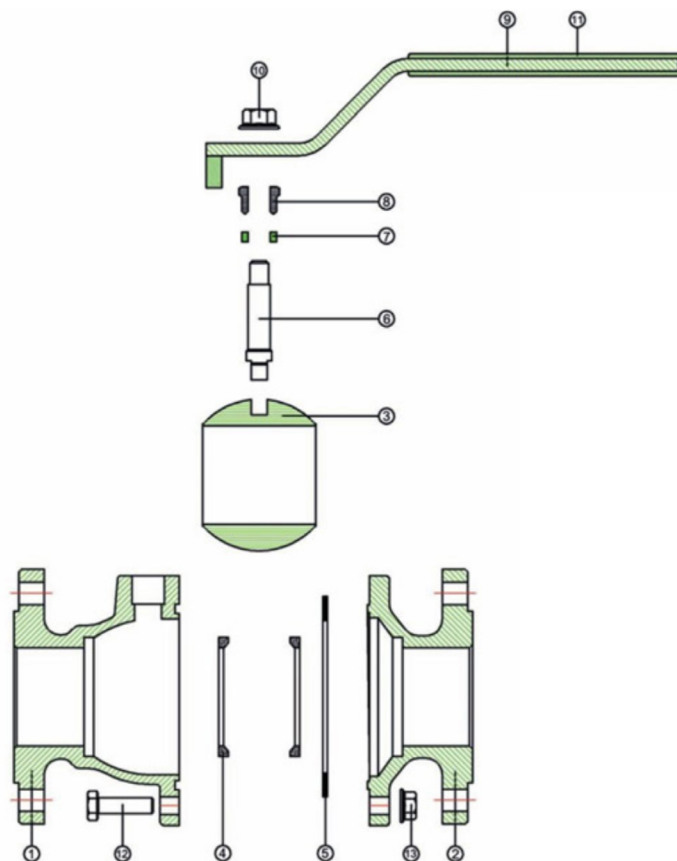


\*Ball valve with electrical actuator

# V751 FLANGED BALL VALVE



## Material List

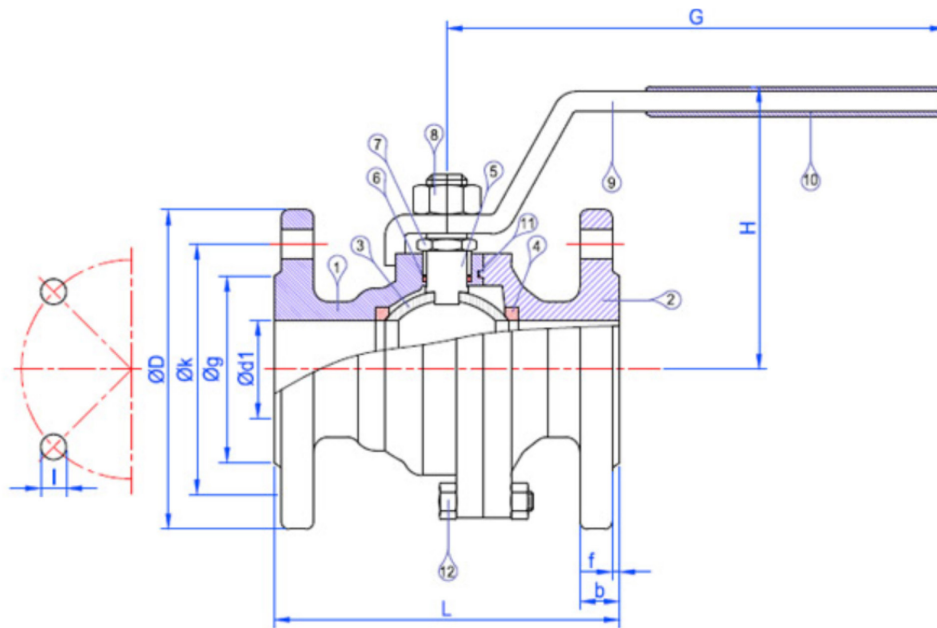


No	Part	Material
1	Long Body	EN-GJL-250 Cast Iron (GG25) / EN-GJS-400 Ductile Iron (GGG40)
2	Short Body	EN-GJL-250 Cast Iron (GG25) / EN-GJS-400 Ductile Iron (GGG40)
3	Ball	AISI 430 / AISI 304 Stainless Steel
4	Ball Sealing	PTFE
5	Body Sealing	PTFE
6	Stem	AISI 420 Stainless Steel
7	Stem Sealing	PTFE
8	Stem Nut	AISI 1040 Steel
9	Handlever	ST-37 Steel
10	Nut	AISI 1030 Steel
11	Lever Cover	PVC
12	Bolt	AISI 1030 Steel
13	Nut	AISI 1030 Steel

# V751 FLANGED BALL VALVE



## Dimensions Table



DN		Dimensions									
mm	d	L	g	k	D	l	f	b	H	G	Hole
25	1"	125	65	85	115	14	3	16	90	150	4
32	1 1/4"	130	76	100	140	19	3	18	108	200	4
40	1 1/2"	140	84	119	150	19	3	18	138	200	4
50	2"	150	99	125	165	19	3	20	115	200	4
65	2 1/2"	170	118	145	185	19	3	20	125	200	4
80	3"	180	132	160	200	19	3	22	150	270	8
100	4"	190	156	180	220	19	3	24	165	270	8
125	5"	200	184	210	250	19	3	26	195	328	8
150	6"	210	211	240	286	23	3	26	215	370	8
200	8"	400	266	295	340	23	3	30	250	400	12
250-R	10"	450	319	355	405	28	3	30	250	400	12