

V512

SOLENOID CONTROL VALVE



Product Description

V512 Solenoid Control Valve is designed to put into use and unmount the pumps with-out damaging the system. Tee fitting is provided. When the system is off, the valve is on. When the system starts, the valve enables water to flow by closing itself gradually. The control of these valves can be maintained by a control device, intermittent relay, switch, PLC control unit, etc.



Technical Data	
Size range	DN40 - DN300
Pressure range	0,7 - 16 bar (10 - 240 psi)
Temperature	-10°C to +80 °C
Flange drilling	Flanged EN 1092-2 / ISO 7005-2 Threaded ISO (BSP) - ANSI (NPT)
Coating	Polyester Epoxy
Testing	EN 12266-1
Marking	EN 19

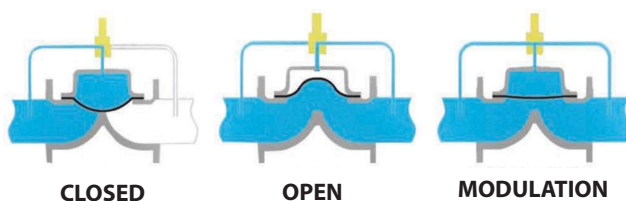
Application Range

- Agricultural irrigation
- Household implementation
- Supply of water fire extinguishing
- Various applications of industrial systems.
- Food and chemical enterprises

Adjustment

Connect the cable of solenoid coil to the panel. Move the three-way globe valve to automatic mode. Drain water to the system.

Working Principle



IRRIGATION



POTABLE WATER

V512

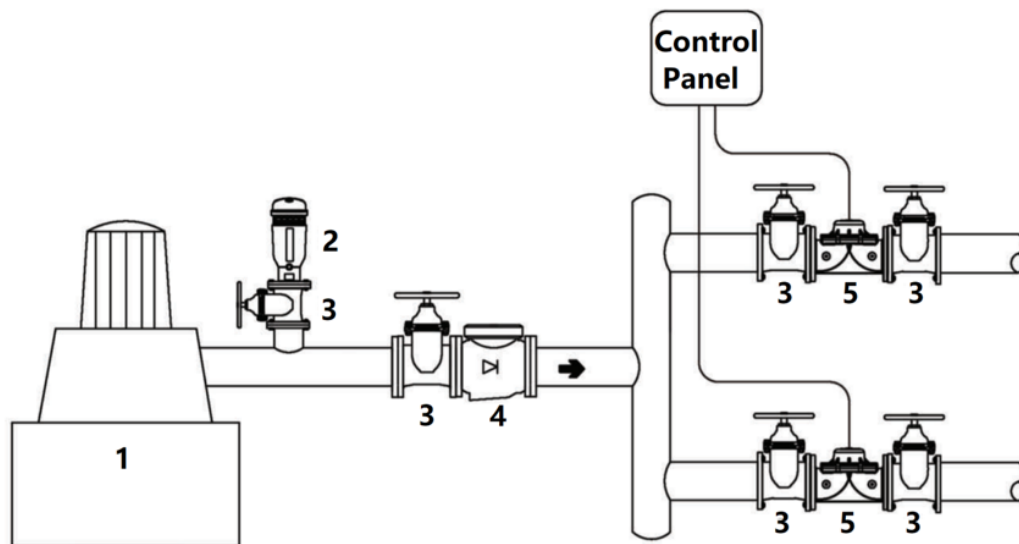
SOLENOID CONTROL VALVE



Product Features

- Low energy consumption.
- Minimum pressure loss.
- Adjustable isolating rate (optional).
- Easy maintenance.
- Control in different voltages.
- Easy and zero adjustment to demanded pressure.
- Does not require maintenance in operation for a long time due to its corrosion resistant components.
- Has a long working life in operation since coating has been made with phosphorylation and over-dried epoxy powder paint.
- Performs perfect modulation in variable flows and even too low flow rates close to zero.
- Has a wide range of application with use of different pilot valves.

Application System



- 1- Pump
- 2- Air Release Valve
- 3- Isolation Valve
- 4- Check Valve
- 5- Solenoid Control Valve

V512 SOLENOID CONTROL VALVE



Material List

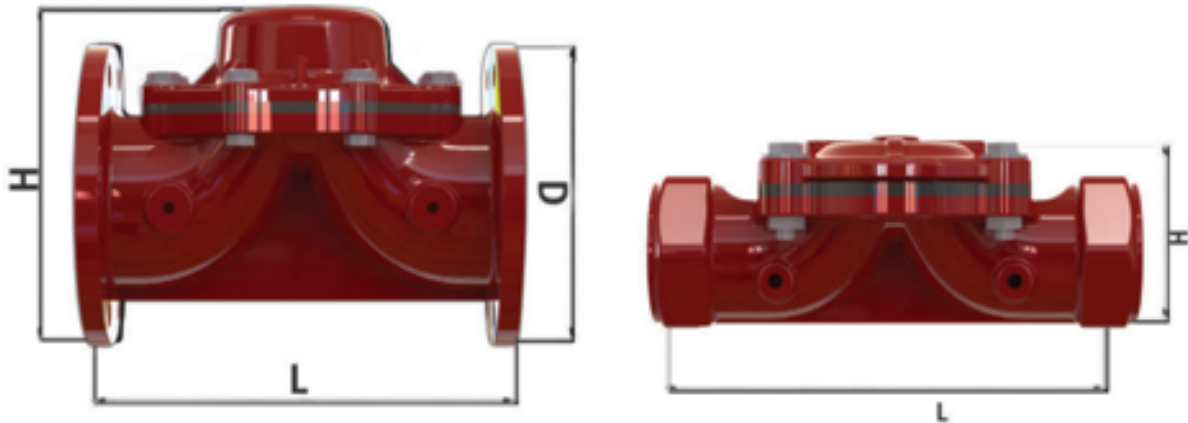


No	Part	Material
1	BODY	GGG40 Ductile Iron / GG25 Cast Iron
2	DIAPHRAM	Court Fabric / Reinforced Natural Rubber
3	COVER	GGG40 Ductile Iron / GG25 Cast Iron
4	WASHER	Plated Steel
5	BOLT	Plated Steel
6	NUT	Plated Steel / MS 58 Brass
7	SPRING THRUST RING	Polyamic
8	SPRING	AISI 304

V512 SOLENOID CONTROL VALVE



Dimensions Table



FLANGED CONTROL VALVES									
DN		L		D		H		Weight	
inch	mm	inch	mm	inch	mm	inch	mm	lbs	kg
2"	50	8	204	6.4	165	6.4	165	33	15
2½"	65	8.1	206	7.2	185	7.2	185	36	16.5
3"	80	11.4	290	7.8	200	7.8	200	57	26
4"	100	11.6	296	8.6	220	8.6	220	61	28
5"	125	12.3	314	9.8	250	9.8	250	72	33
6"	150	16.2	413	11.2	285	12.6	321	125	57
8"	200	18.5	470	13.3	340	18.8	403	187	85
10"	250	18.5	470	16	407	17	433	226	103
12"	300	20.8	530	18.3	466	19.5	497	316	145
THREADED CONTROL VALVES									
DN		L		H		Weight			
inch	mm	inch	mm	inch	mm	lbs	kg		
2"	50	8.1	206	4.2	107	28.6	13		
2½"	65	9	230	4.3	110	30.8	14		
3"	80	13.7	350	5.7	145	44	20		