

# V401 COUPLINGS



## Product Description

TVN V401 Couplings are the flexible solution for joining pipes. These couplings are ideal for absorbing noises and vibrations in pipelines and overcoming axial offset, guaranteeing a permanently leaktight connection. It is a connection part enables the necessary repair and modifications on the pipelines, connecting pipes with different type and diameter. Supplied as standard with EPDM gasket for water applications.

Each rubber gasket is contained in a compression chamber which is formed by the follower end rings, middle ring and pipe surface. By tightening the coupling's bolts, the follower end rings are drawn together, thus reducing the volume of the compression chambers and compressing the gaskets, resulting in a pressure tight seal. The TVN coupling allows an expansion and contraction of  $\pm 2,5$  mm and an angular deflection of  $3^\circ$  for each gasket ( $\pm 5$  mm &  $6^\circ$  in total for each coupling).



Technical Data	
Size range	DN50 - 600
Pressure range	PN10 - 16
Temperature	-10°C to +110 °C
Gasket	EPDM or NBR (WRAS Approved is optional)
Standard Flanges	Raised Flange & Reduced Bore
Coating	Fusion bonded epoxy (WRAS Approved is optional)
Testing	EN 12266-1
Marking	EN 19
Operation	Automatic
Variation	TVN 402 PE Type Coupling

## Application Range

- Water distribution lines
- Water transmission pipelines
- Waste water applications
- Pumping Stations

## Related Products

- V351 Flange Adaptor
- V401 Coupling
- V151 Gate Valve



WASTE WATER



IRRIGATION



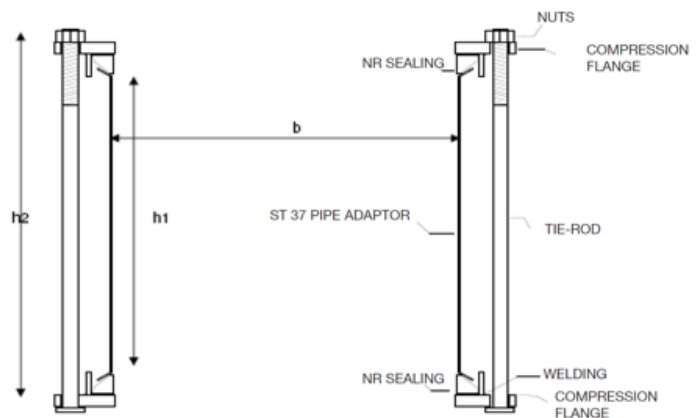
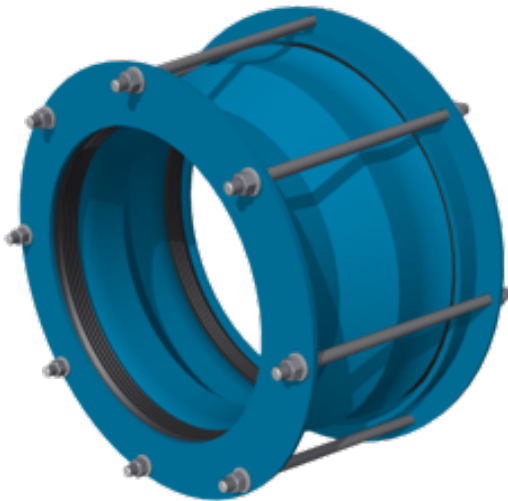
POTABLE WATER

# V401 COUPLINGS



## Product Features

- Working pressure PN10-16, acceptable temperature up to 110 °C
- Allows the connection of pipes having angular misalignment.
- With NBR gasket option, coupling will be suitable for sewage and drainage applications.
- Universal couplings are suitable for carbon steel, PVC, polyethylene, ductile iron pipe networks.
- Suitable for water and neutral liquids, sewage applications.
- Light weight ductile iron construction design provides compact usage.
- Pipes with high diameter differences can be connected to each other by using reduced bore pipe couplings.
- Fully corrosion resistant construction. Inside and outside fusion bonded epoxy coating.
- Flanges drilling according to EN 1092-2 / ISO 7005-2.
- Hydrostatic test pressure for shell: PN x 1.5 according to EN 12266-1.



DN (mm)	b (mm)	h1 (mm)	h (mm)	Body Thickness (mm)	Compression Flange	Bolts & Nuts	Sealing	Coating
1800/16 DI	1885	37	50	8	St 37 20 mm	24x36	EPDM / NBR	Blue Epoxy
1000 / 25 DI	1058	37	50	8	St 37 20 mm	20x24	EPDM / NBR	Blue Epoxy
700 /25 DI	748	25	36	6	St 37 20 mm	20x12	EPDM / NBR	Blue Epoxy
500 /25 DI	538	25	36	6	St 37 20 mm	20x10	EPDM / NBR	Blue Epoxy
450 /25 DI	490	25	36	5	St 37 20 mm	16x8	EPDM / NBR	Blue Epoxy
450 /16 DI	490	25	36	5	St 37 20 mm	16x8	EPDM / NBR	Blue Epoxy

# V401 COUPLINGS



## Dimensions Table

DN (mm)	Corresponding Size	Pipe Size Range mm	Internal Diameter (b) mm	Internal Height (h1) mm	Total Height (h2) mm	Coupling Thickness (mm)	Suppression Flange	Bolts and Nuts	Gasket	Pressure Range	Coating
100	110 mm	109-126	128	190	260	5 MM ST37	GGG 40	M14/270 ST37 4 sets	EPDM / NBR	10-16-25	Blue Epoxy
150	160 mm	155-170	183	180	260	5 MM ST37	GGG 40	M14/270 ST37 4 sets	EPDM / NBR	10-16-25	Blue Epoxy
200	225 mm	215-230	243	180	260	5 MM ST37	GGG 40	M14/270 ST37 4 sets	EPDM / NBR	10-16-25	Blue Epoxy
250	250 DI	270-275	302	250	350	5 MM ST37	GGG 40	M14/360 ST37 6 sets	EPDM / NBR	10-16-25	Blue Epoxy
300	300 DI	315-332	334	250	350	5 MM ST37	GGG 40	M14/360 ST37 6 sets	EPDM / NBR	10-16-25	Blue Epoxy
350	350 mm	340-357	359	250	350	5 MM ST37	GGG 40	M14/360 ST37 6 sets	EPDM / NBR	10-16-25	Blue Epoxy
400	400 DI	418-435	437	250	350	5 MM ST37	GGG 40	M14/360 ST37 8 sets	EPDM / NBR	10-16-25	Blue Epoxy
500	500 mm	495-512	514	250	350	5 MM ST37	GGG 40	M14/360 ST37 10 sets	EPDM / NBR	10-16-25	Blue Epoxy
600	600 DI	623-640	640	250	350	5 MM ST37	GGG 40	M14/360 ST37 12 sets	EPDM / NBR	10-16-25	Blue Epoxy