

Product Description

TVN V209 Dual-Plate Check valve is one of the most compact check valves. The wafer-type check valves are designed with a short overall length. Their excellent hydrodynamic properties result in very low pressure losses. Their lower weight brings advantages during installation, transport and storage.

When fluid enters the valve, the pressure causes the discs to open, pushing the spring. When the fluid stops, the spring returns to its compressed state, making the discs return to the closed position, ensuring a quick closing



Technical Data	
Size range	DN50 - DN800
Pressure range	PN 16
Temperature	-10°C to +130 °C
Face to face	EN 558 Series 16
Connection	Wafer Type EN 1092-1 / ISO 7005-1
Testing	EN 12266-1
Marking	EN 19

Application Range

- Hot & cold water
- Power & heat engineering
- Pressurized Air
- Industrial technologies

Related Products

- V102 Wafer Type Butterfly Valve
- V104 Lug Type Butterfly Valve
- V701 Ball Valve
- V651 Flexible Rubber Joint
- V851 Y-Strainer



HVAC

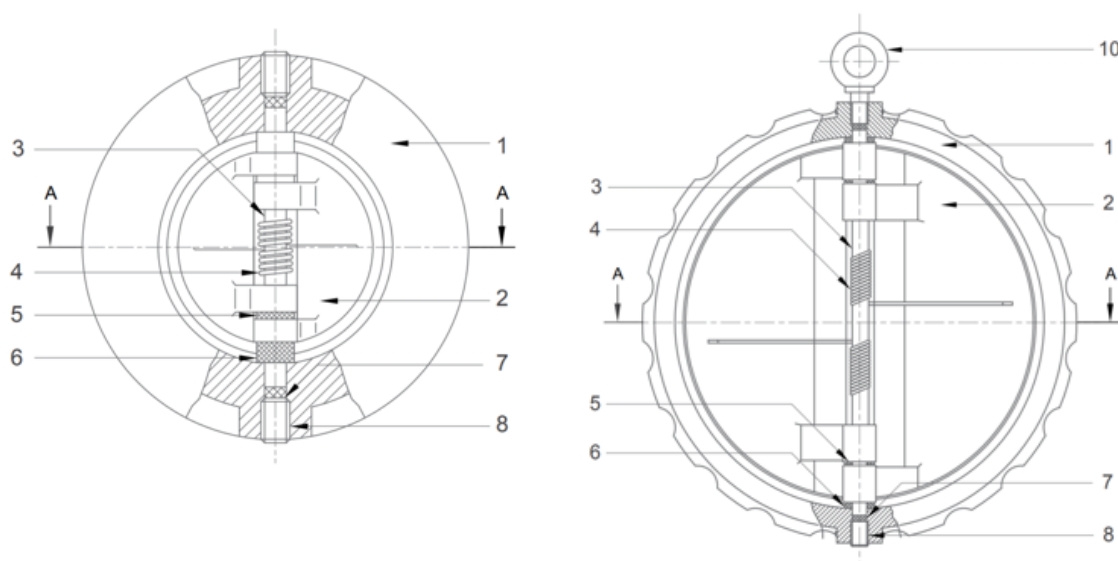


POTABLE WATER

Product Features

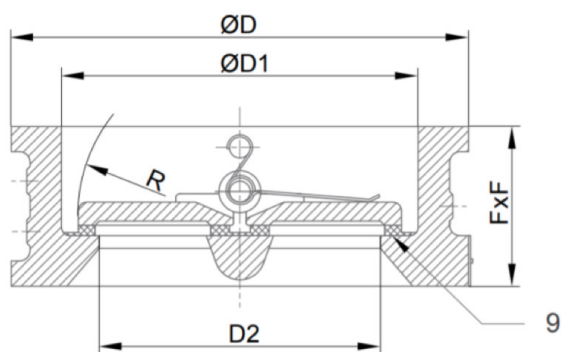
- Dual plate check valve is economical on installation and maintenance because installation is required less and light weight.
- The spring-torque control mechanism enables the valve to open smoothly.
- With a long service life, the valve's preservation and repair is simple.
- They are suitable for liquid, gas and steam in heating, air conditioning and cooling systems.
- The check valves can also be used in steam and condensate systems, water supply, oil and natural gas pipes.
- Same valve can be installed horizontally or vertically.
- With the suitable springs, they can be installed in any position.
- The valve shaft is made of stainless steel material to prevent rust and corrosion.
- Self-seating design that reduces dragging along the seat surfaces.
- Hydrostatic test pressure for seat: PN x 1.1 , for shell: PN x 1.5 according to EN 12266-1.

Material List

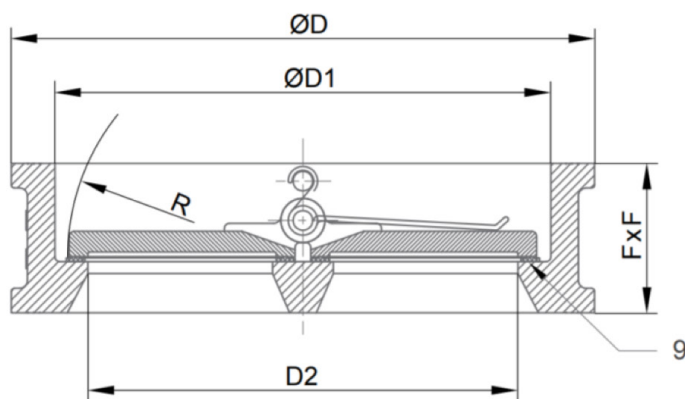


No	Part	Material
1	Body	GG25/ GGG40
2	Disc	AISI 304 / AISI 316
3	Stem	AISI 304 / AISI 316
4	Spring	AISI 304 / AISI 316
5	Bearing	PTFE
6	Bearing	PTFE
7	Sealing O-Ring	EPDM
8	Hex Screw	AISI 304 / AISI 316
9	Seat	EPDM
10	Eye Bolt	AISI 304 / AISI 316

Dimensions Table



DN50 - DN500



DN600 - DN800

DN	FxF	ØD	ØD1	ØD2	R	KG
50	43	96	65	40	27	1.2
65	46	110	80	60	35	2.1
80	64	128	94	70	42	2.9
100	64	156	117	88	50	4.3
125	70	187	145	115	64	6.4
150	76	213	171	134	77	9.1
200	89	267	224	182	102	15.2
250	114	328	265	220	125	26.5
300	114	375	310	260	146	37
350	127	444	360	298	170	55
400	140	495	410	350	195	80
450	152	558	450	385	215	101
500	152	615	505	438	238	114
600	178	723	624	573	292	172
700	229	812	720	680	350	258
800	241	948	825	770	400	322