

V105

BUTTERFLY VALVE

SERIES 13



Product Description

TVN V105 Double Eccentric Resilient Seated Butterfly Valve is one of the main product type preferred in water networks. Through its disc design where the center is shifted in two axis, this leads to a big improvement on decreasing operation torque values, lowering the friction on disc sealing area and extended service life. Series 13 type occupies less space compared to Series 14 type.



Technical Data	
Size range	DN200 - DN700
Pressure range	PN 10-16
Temperature	-10°C to +130 °C
Design	EN 593
Face to face	EN 558 Series 13
Connection	EN 1092-2 / ISO 7005-2
Coating	Thermoplastic Powder Epoxy
Testing	EN 12266-1
Marking	EN 19
Operation	Gearbox
	Electrical Actuator Quarter
	Turn/Modulating

Application Range

- Potable water applications
- Wastewater & sewage systems
- Heating, ventilation and air conditioning systems
- Water treatment and distribution systems
- Seawater applications
- Mining industry
- Fire extinguishing systems

Related Products

- V202 Tilting Check Valve
- V251 Dismantling Joint
- V151 Gate Valve
- V651 Rubber Expansion Joint
- V351 Flange Adaptor
- V401 Coupling



POTABLE WATER



WASTE WATER



IRRIGATION

V105

BUTTERFLY VALVE

SERIES 13



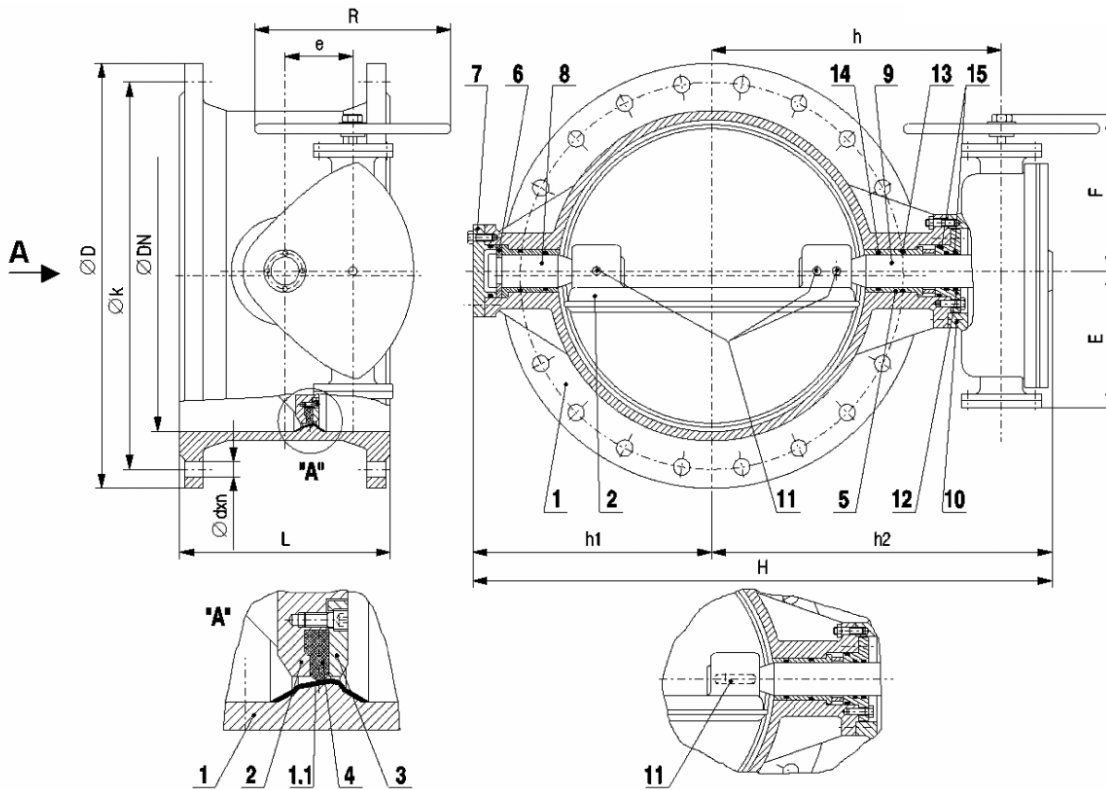
Product Features

- GGG40/50 Ductile Iron Body & Disc allows high impact and stretching resistance
- Double Eccentric / Double Offset Disc Design
- Resilient Seated Type
- Disc sealing ring EPDM as default. NBR or VITON options are available
- Block moulded solid/one-piece T-shaped disc sealing ring extends drop-tight sealing life time
- Easy to replace disc sealing ring without dismantling the valve from the pipeline and without dismantling the disc from the valve itself just by taking out the retaining ring through its bolts. It is easy to replace the disc sealing ring without any additional equipments
- SS308/316 grade stainless steel welding seat on the body is manufactured through automatic welding machines and microfinished precise milling operation. When disc is fully closed, disc sealing ring applies equal pressure on every point on the welding seat.
- Drop-tight closure
- Double O-ring feature on both shafts ensures high sealing
- Shafts are equipped with bronze bushings having high corrosion resistance
- Ensures minimized pressure loss and increased energy efficiency with double shaft design
- Easy to operate with self locking gearbox equipped with mechanical indicator
- Low torque requirements during operation
- Easy to install on the line, light weight and occupies less space
- Full coating on the body and disc internally & externally with an average of 250 microns. Higher coating thicknesses are available when required.
- WRAS approved coating available upon request which meets hygienic requirements for potable water applications
- Maintenance free design for the valve and gearbox
- Default operation is gearbox with ISO top flange ready to connect electrical actuator. Pneumatic actuators can be installed directly on the top flange of the valve itself.
- V105 Double Eccentric Butterfly valves are designed bi-directional according to EN1074-2. For proper installation, direction arrow on the body should be considered.
- Operation with extended spindle version is also available
- Balanced positioned lifting holes on the body ease transportation and installation
- Hydrostatic test pressure for seat: PN x 1.1 , for shell: PN x 1.5 according to EN 12266-1.

V105 BUTTERFLY VALVE SERIES 13



Material List



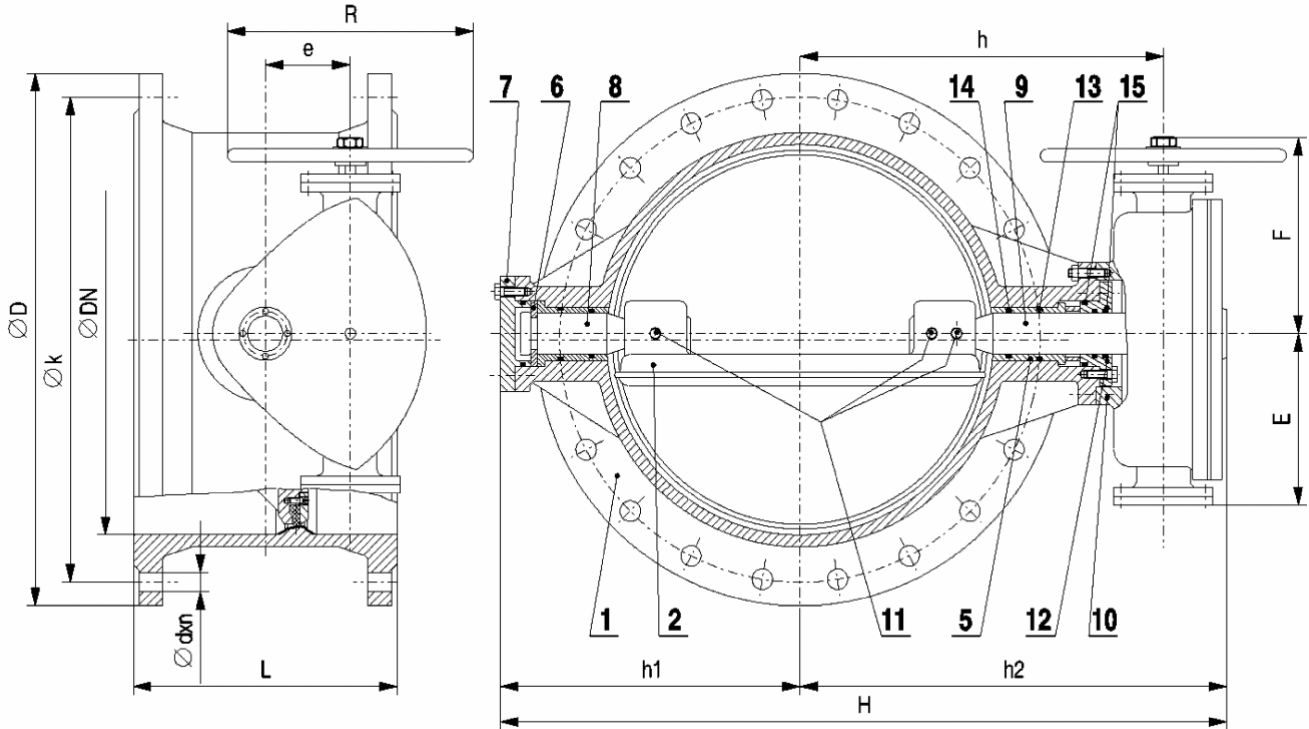
Part No	Material
1	GGG50 Ductile Iron
2	GGG50 Ductile Iron
3	GGG50 Ductile Iron
4	EPDM
5	Bronze
6	Bronze
7	GGG50 Ductile Iron
8	X20Cr13
9	X20Cr13
10	GGG50 Ductile Iron
11	A2
12	GGG50 Ductile Iron
13	EPDM
14	EPDM
15	EPDM

V105

BUTTERFLY VALVE SERIES 13



Dimensions Table



DN	L	D		k x n x d		E	F	e	h	h1	h2	H	R	KG
		PN10	PN16	PN10	PN16									
200	152	340	340	295x8x23	295x20x23	118	176	50	272	210	315	525	250	68
250	165	395	405	350x12x23	355x12x28	118	176	50	375	240	385	625	250	86
300	178	445	460	400x12x23	410x12x28	200	250	85	466	291	500	791	320	142
350	190	505	520	460x16x23	470x16x28	200	250	85	491	320	525	845	320	178
400	216	565	580	515x16x28	525x16x31	200	250	85	433	345	550	895	320	218
450	222	615	640	565x20x28	585x20x31	200	250	85	458	375	560	935	320	271
500	229	670	715	620x20x28	650x20x34	295	390	145	537	445	680	1125	500	399
600	267	780	840	725x20x31	770x20x37	295	390	145	597	515	745	1260	500	548
700	292	895	910	840x24x31	840x24x37	430	540	230	632	525	807	1332	640	710